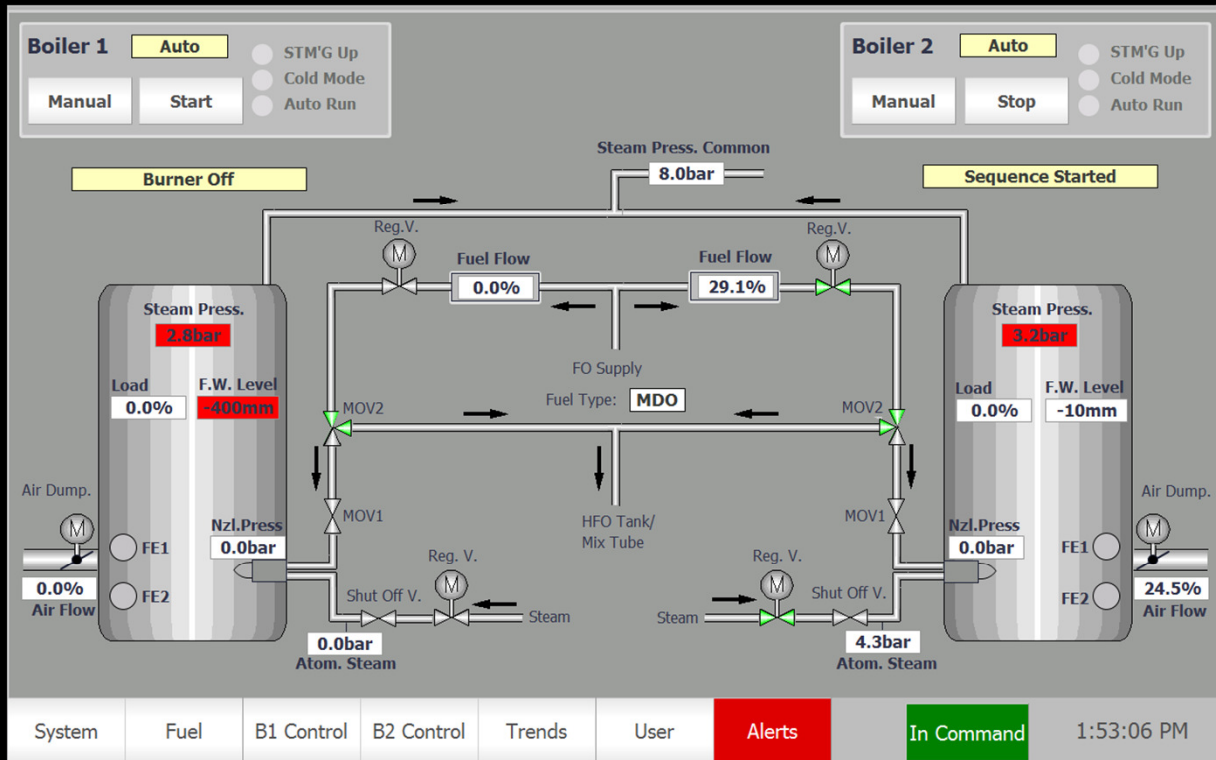


BBMS - UNISAB II Retrofit

Boiler & Burner Management System

BBMS

SBS



Functional parts inside BBMS software:

- Sequencer
- MGO/HFO Combustion F/A curves
- MC (Master Controller)
- FOC (Fuel Oil Controller)
- AIRC (Air Controller)
- WLC (Water Level Controller)
- Alarm processing page
- Monitoring of process values
- Purging time adjustable
- Post-Purging time adjustable
- Steaming up
- Master / Slave option
- Tanker Service / Eco / IGS mode of operation
- Automatic operation of Boiler
- Manual operation of Boiler
- Feed Water pumps control block
- Fuel Oil pumps control block
- Oxygen Analyzer monitoring
- Smoke Analyzer monitoring
- Ethernet Communications
- Option for efficiency monitoring for SEEMP improvement

Siemens marine type approved hardware equipment used.

SBS Projects & Retrofits